

Social Connection



Consumer Driven Drop-In Center

For ages 18 and older

116 West Spring Street ~ Titusville, PA

Call today: (814) 775-0770

www.goseniors.org

Mon	Tue	Wed	Thu	Fri
1 Closed • TODAY •	2 	3  Birthday Cake	4 	5  Movie Day
8  Eclipse Party and Cookout at the Senior Center	9 Arts & Crafts and Snacks	10 Putting up Spring & Summer Decorations!	11 Pitt Meet at Noon	12 DRUM CIRCLE 
15 	16 Chinese in Butler Depart 10:00 	17 GAMES and group	18  BISCUITS & GRAVY	19  Movie Day
22 PORK ROAST & SAUERKRAUT	23  Pack a lunch ~ Depart at 10 AM	24 WALK AROUND THE BLOCK 	25 Bean Bag Toss at the Senior Center 	 HAPPY MAC AND CHEESE DAY!
29 		 <i>April showers bring</i> MAY FLOWERS		Please note that this calendar is subject to change. Call the day before to double check. (814) 775-0770

Social Connection



Consumer Driven Drop-In Center

For ages 18 and older

116 West Spring Street ~ Titusville, PA 16354

For more information call: (814) 775-0770

E-Mail: socialcon@zoominternet.net

The Social Connection is a Consumer Driven Mental Health Drop-In Center (DIC) for the city of Titusville and its surrounding areas.

The Center's purpose is for consumers to share friendship, a warm environment and a place to increase their personal socialization with peers who have similar life experiences.

Titusville Social Connection Hours of Operation:

Monday thru Friday

8:00 AM to 4:00 PM

Closed on Saturdays and Sundays

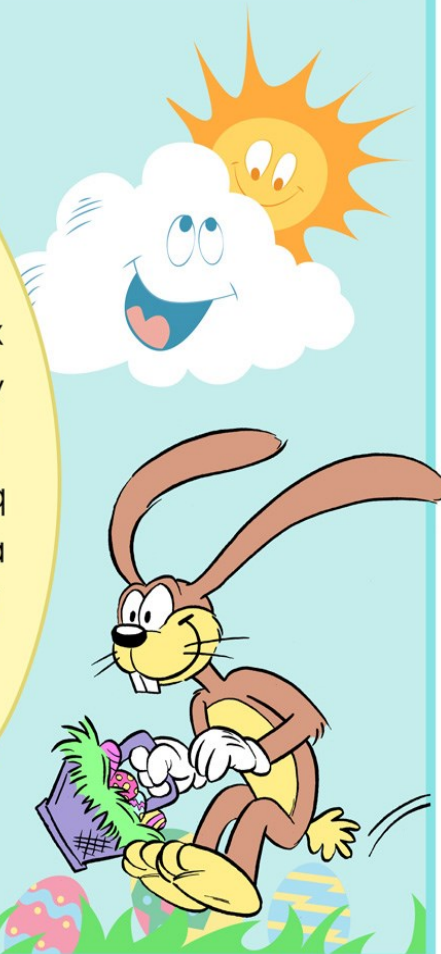
www.goseniors.org

Social Connection is overseen by the Titusville Area Senior Citizens Corporation, and receives funding from Crawford County Human Services.



Easter Word Search

w b s i n
 b t u k u i i
 l a i n c u n h d
 o s b n i z r d l
 g y k b y h n u n a x
 e d e a m c c o h m y
 c n t r t k i o o b l
 c a s n l t l e s y q
 b c u i a i q p l v a
 v h n c d k r x o p j
 g a a n i n s r c
 v y s n p g i f t
 i g p g l h s
 e i f



eggs
bunny
rabbit
chick

spring
April
Sunday
basket

hunt
candy
vacation
lamb

gift
sun
duckling
holiday